





# TOTALLY COMPLETE



Imagine a life of ultimate convenience.

A home, readily furnished for your arrival. Windows that sparkle, untouched by dust. Linens, seamlessly laundered by the housekeeper. Even the smallest of maintenance concerns simply nonexistent. And should you ever require anything at all, subscribe to Antel and enjoy dedicated service that tends to your every need.

**This is the art of refined living.**

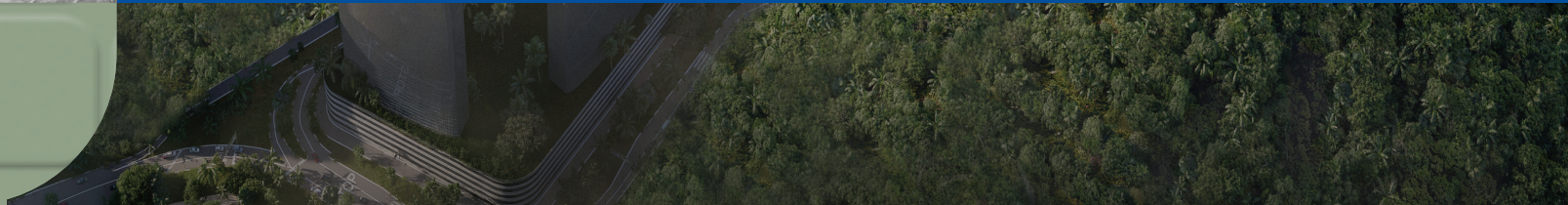
*\* Additional services such as housekeeping and rental management are exclusively available to purchasers who subscribe to Antel Group's service packages.*



## Snøhetta X Jesselton Docklands

Great design begins with a shared vision. At Jesselton Docklands, we're building more than a destination — we're shaping a legacy. That's why we've collaborated with Snøhetta — the international architecture and design firm behind icons like the Oslo Opera House and Bibliotheca Alexandrina — to craft the visionary master plan and design key components across Ecology, Retail, Tourism, and Homes. To bring the full vision to life, we're also partnering with KTDA and Lateral — two of Malaysia's leading architectural firms, entrusted with shaping the Business District.

Today, the journey continues with this collective of esteemed architects, each bringing their unique touch to the buildings and spaces that will define Jesselton Docklands. Together, we're reimagining Kota Kinabalu's waterfront — with purpose, presence, and poetry in every line.







## TOTALLY ACCOMMODATED



SERVICES

When it comes to your guests, we are at their beck and call. Literally. Want to check in about a late check-out? Done in a ring. Clean up on isle room party? We're right at the door. At Bedrock Suites, a 10-star review begins with 5-star service. All made seamless with Antel.

- Concierge • Lobby reception
- Room & cleaning service



FACILITIES

## TOTALLY PUNCHING UP



Life may pack a punch, but your rest is always a soft landing. Take a swim right up to the clouds. Lay down in the leaves of trees. Make a killing out in the wild. And the best part? You're not so much living the hotel life. You're owning it.

- Forest hammock garden • Community kitchen
- Rooftop boxing gym • Infinity pool

*These facilities are exclusively available for occupants' use, either through a service provider arrangement or on a pay-per-use basis.*

- Laundromat • Outdoor co-working space • Souvenir shop
- Locker facility • Meeting salon • Function room





## TOTALLY YOUR STYLE



PACKAGE

Forget the pretentious designers, we've got you ID'd from the door. Laid out and rolled out in 5 different looks. Decked out in the snazziest gear and doodads. You don't even need plants. We fully landscaped all your gardens.

- Full ID • Fully furnished
- 5 different types of suites



## TOWER A & B UNIT TYPE

### COMMERCIAL SUITES



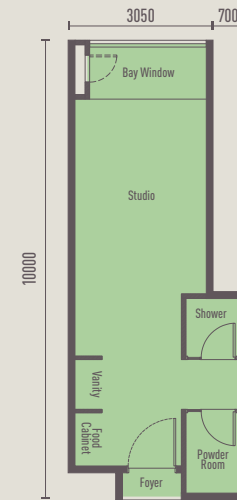
SEA



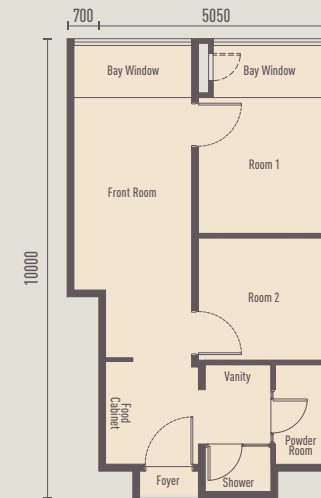
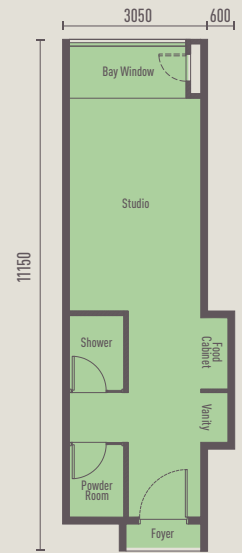
SIGNAL  
HILL



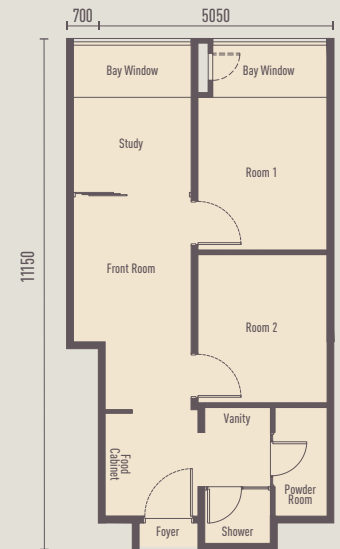
**A1 | 351 SQ FT**  
1 Studio, 1 Vanity,  
1 Powder Room, 1 Shower



**A2 | 372 SQ FT**  
1 Studio, 1 Vanity,  
1 Powder Room, 1 Shower



**E | 568 SQ FT**  
2 Room, 1 Front Room, 1 Vanity,  
1 Powder Room, 1 Shower



**F | 640 SQ FT**  
2 Room, 1 Study, 1 Front Room, 1 Vanity,  
1 Powder Room, 1 Shower



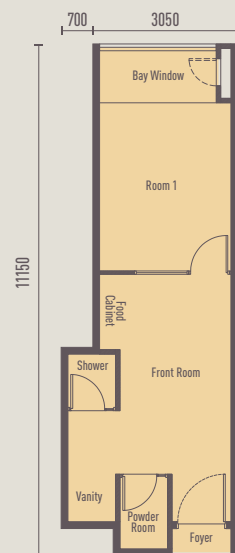
# B1 | 389 SQ FT

1 Room, 1 Front Room, 1 Vanity,  
1 Powder Room, 1 Shower



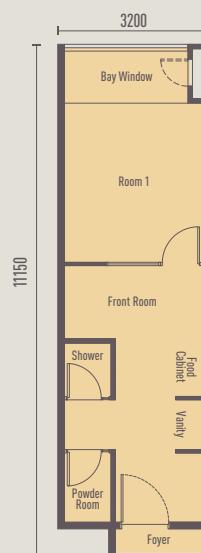
# B1A | 388 SQ FT

1 Room, 1 Front Room, 1 Vanity,  
1 Powder Room, 1 Shower



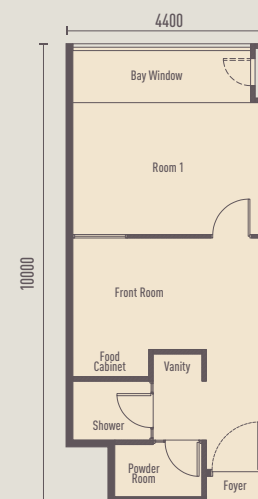
# B2A | 373 SQ FT

1 Room, 1 Front Room, 1 Vanity,  
1 Powder Room, 1 Shower



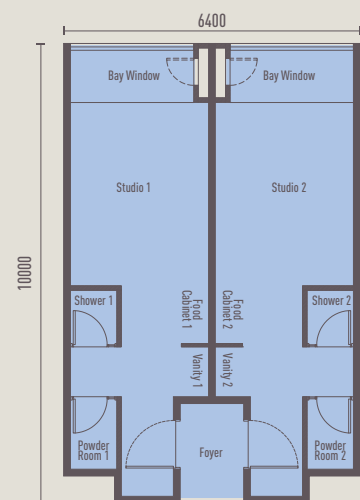
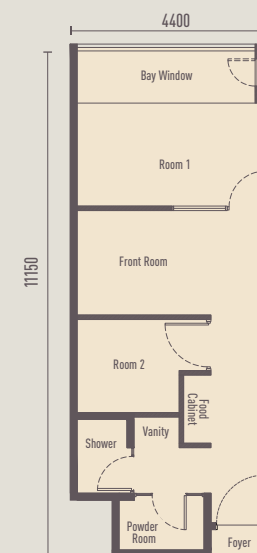
# C | 457 SQ FT

1 Room, 1 Front Room, 1 Vanity,  
1 Powder Room, 1 Shower



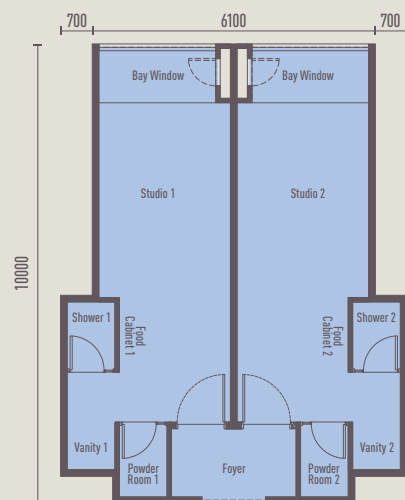
# D | 511 SQ FT

2 Room, 1 Front Room, 1 Vanity,  
1 Powder Room, 1 Shower



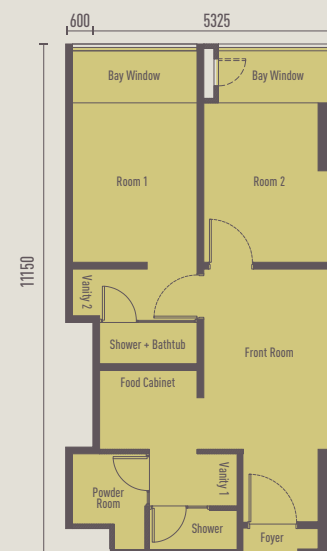
# G1 | 666 SQ FT

Dual Key, 2 Studio, 2 Vanity,  
2 Powder Room, 2 Shower



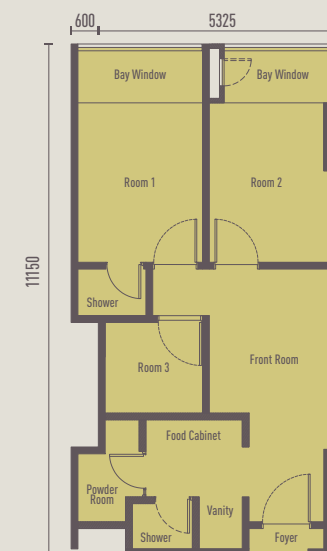
# G2 | 700 SQ FT

Dual Key, 2 Studio, 2 Vanity,  
2 Powder Room, 2 Shower



# H | 668 SQ FT [CORNER UNIT]

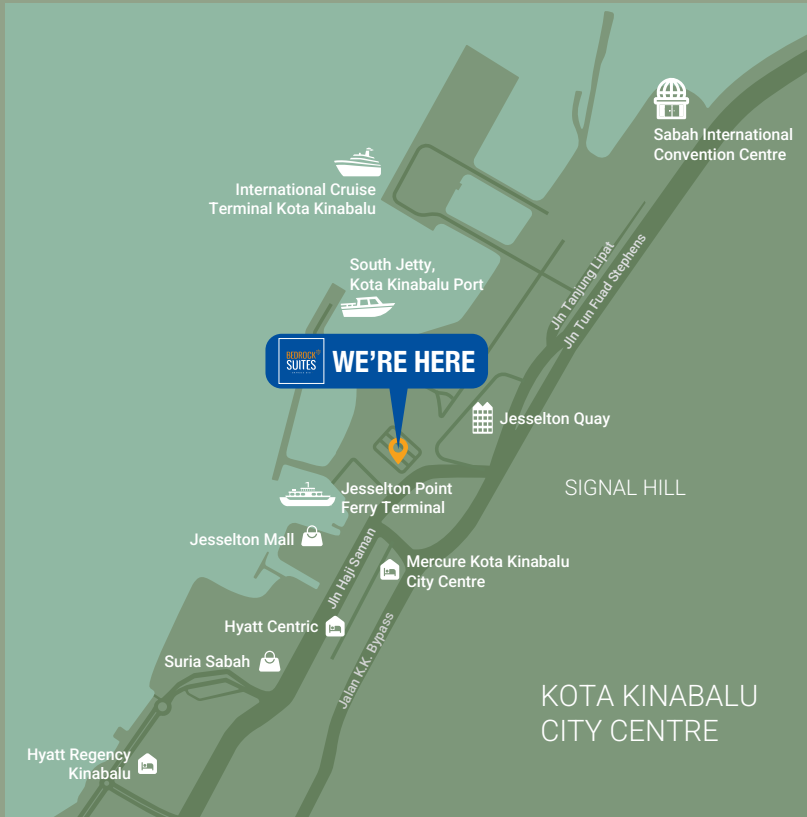
2 Room, 1 Front Room, 2 Vanity, 1 Powder Room,  
1 Shower, 1 Shower with bathtub



# H1 | 668 SQ FT [CORNER UNIT]

3 Room, 1 Front Room, 1 Vanity,  
1 Powder Room, 2 Shower





For more information, please call  
**088-662 111**  
[docklands.com.my](http://docklands.com.my)

Scan to visit our  
 JD Live Lab



A prestigious  
 project by:



Developer:

**Jesselton Docklands 1 Sdn Bhd**  
 G-07, Ground Floor, JQ Central,  
 Coastal Highway, Off Jln Tun Fuad Stephens,  
 88400 Kota Kinabalu, Sabah.

**Disclaimer:**

All information, items and/or products herein contained and/or displayed, including but not limited to measurement, features, materials, specifications, brands, colours, plans, drawings, images, pictures, visual renditions, illustrations and presentation of interiors, furniture and fittings layout, landscapes, roads, access, lifestyle, scale models, show units and/or development are artist's impressions/renderings for illustration purposes only and are subject to change as may be required and/or recommended by the relevant authorities and/or the developer's architects, engineers and/or consultants without prior notification to you. Nothing contained herein shall be taken as identical representation of the actual state thereof or constitute or be construed to constitute an offer, a contract, part of the sale and purchase agreement (SPA), a representation and/or warranty on the part of the developer, unless expressly and specifically incorporated in the SPA. Prospective purchasers are advised to read and scrutinize the SPA together with its enclosures or to engage relevant independent professionals for advice prior to signing of the SPA. The developer and/or other related companies and parties shall neither be held responsible for any claims, error or inaccuracy nor be liable for any losses, damages, costs, expenses, or liabilities that may be incurred, suffered or sustained resulting from any reliance on any information, items and/or products herein contained and/or displayed or any part thereof.